

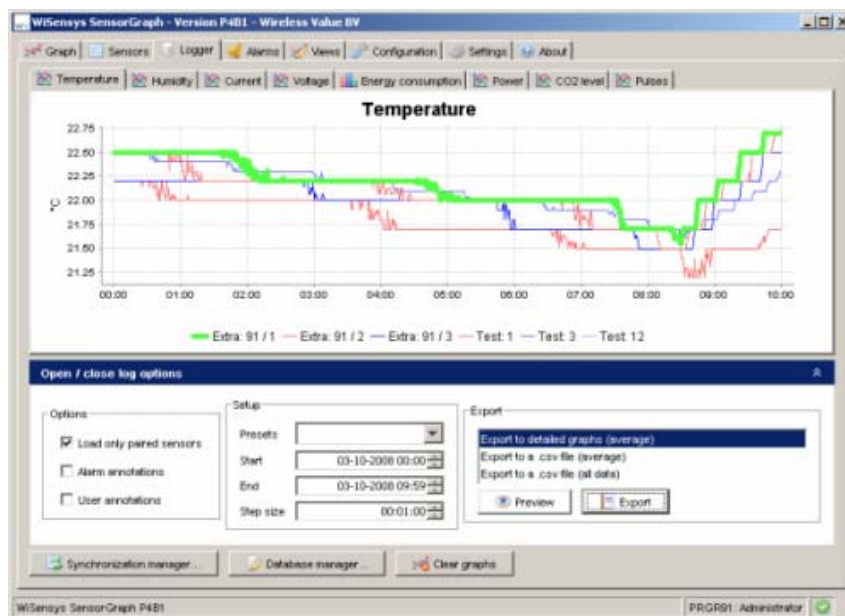
SensorGraph, WiSensys PC application

SensorGraph is the WiSensys® PC software that is used during installation and operation of the system.

During installation SensorGraph is used to configure the base station and to add sensors to the system. During operation the program is used to present and log measurement values. SensorGraph can also be used to retrieve logged values from disk and to present them on screen.

Another standard feature is setting and handling of alarms from sensors. Any sensor can be programmed to monitor upper and lower boundaries and to generate an alarm when measurement values are outside these boundaries. Simultaneously, SensorGraph can also be used to set and monitor alarm thresholds in addition to the boundaries in the sensors.

Some sample screenshots can be found below.



Logger tab with historical data.

WiSensys SensorGraph - Version P4B1 - Wireless Value BV

Graph Sensors Logger Alarms Views Configuration Settings About

Base	Sensor type	Sensor name	Channel	Last sample	Lowest sample	Highest sample	Equation	Visible	Appearance
PRGR91	Temperature	Extra: 91 / 1	Temperature	22.5 °C	22.0 °C	23.0 °C	Temperature ...	<input checked="" type="checkbox"/>	
PRGR91	Temperature	Extra: 91 / 2	Temperature	22.7 °C	21.7 °C	23.0 °C	Temperature ...	<input checked="" type="checkbox"/>	
PRGR91	Temperature	Extra: 91 / 3	Temperature	22.5 °C	21.7 °C	22.7 °C	Temperature ...	<input checked="" type="checkbox"/>	
PRGR91	Temperature	Test: 1	Temperature	22.2 °C	22.2 °C	22.5 °C	Temperature ...	<input checked="" type="checkbox"/>	
PRGR91	Humidity & T...	Test: 3	Humidity	45.8 %RH	45.8 %RH	45.1 %RH	Humidity - %...	<input checked="" type="checkbox"/>	
PRGR91	Humidity & T...	Test: 3	Temperature	22.7 °C	22.6 °C	22.7 °C	Temperature ...	<input checked="" type="checkbox"/>	
PRGR91	Current	Test: 7	Current	-120.00 mA	-120.00 mA	-100.00 mA	Current - mA	<input checked="" type="checkbox"/>	
PRGR91	Low Voltage	Test: 10	Voltage	0.001 V	0.001 V	0.002 V	Voltage - V	<input checked="" type="checkbox"/>	
PRGR91	Energy (multi...	Test: 11	Energy cons...	-0.000 kWh	-0.000 kWh	0.000 kWh	Energy cons...	<input checked="" type="checkbox"/>	
PRGR91	Energy (multi...	Test: 11	Power	-0 W	-0 W	0 W	Power - W	<input checked="" type="checkbox"/>	
PRGR91	Carbon Diox...	Test: 12	CO2 level	664 ppm	611 ppm	660 ppm	CO2 level - p...	<input checked="" type="checkbox"/>	
PRGR91	Carbon Diox...	Test: 12	Humidity	91.3 %RH	89.6 %RH	92.0 %RH	Humidity - %...	<input checked="" type="checkbox"/>	
PRGR91	Carbon Diox...	Test: 12	Temperature	45.2 °C	44.6 °C	45.3 °C	Temperature ...	<input checked="" type="checkbox"/>	
PRGR91	Pulse	Test: 13	Pulses	0.000 Pulses	0.000 Pulses	0.000 Pulses	Pulses - Puls...	<input checked="" type="checkbox"/>	

Refresh Save

WiSensys SensorGraph P4B1 PRGR91: Administrator

Sensor tab with tabular display of measurement values.