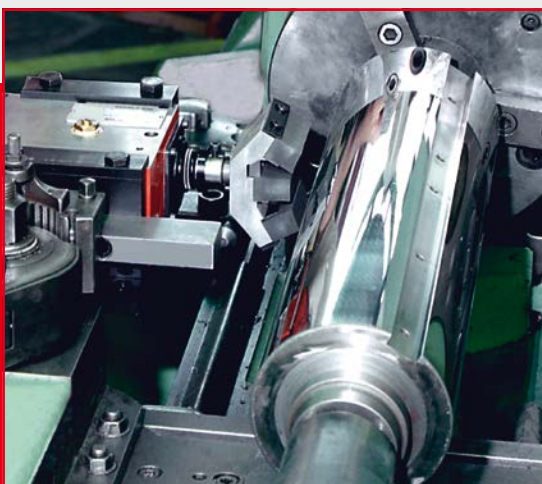


Superfinishing Attachments

Series 300



Mechanical superfinishing device for mounting to medium and large base machines to provide superfinishing of ground and fine-turned surfaces. This unit is well suited for machining rolls to a mirror finish.

Superfinishing Attachments Series 300

supfina

The 300/201 series superfinishing attachments are designed specifically for intensive, non-stop or multi-shift use. Oscillation is generated mechanically by means of twin eccentric mechanisms, which result in remarkably quiet operation. The permanent oscillation amplitude remains constant even under load alternation.

The pneumatically controlled stone guide system is integrated in the sturdy cast iron housing and the contact pressure of the superfinishing stone can be finely adjusted. Wear of the superfinishing stone is automatically compensated by the machine.

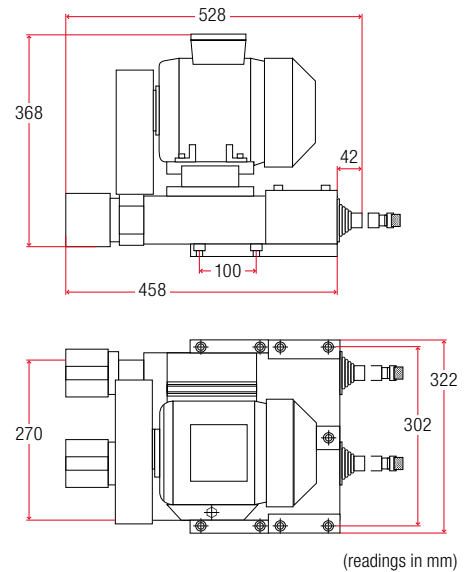
Technical specifications	Supfina 300
Frequency DH/min, max	2200
Amplitude in mm	±2.5
Air pressure in bar	1–6
Attachment weight in kg	90
Clamping device in kg	20
Stone guide stroke in mm	25
No. of stone guides	2
Piston surface in cm ²	12
Operating voltage	400V/50 Hz
US Version	110V/60 Hz
Power rating	1.1 kW

Superfinish Know-how

... in all applications with highest economical, ecological and efficient requirements for high-end surface and geometry qualities. You require technology consulting? Contact us.



Supfina 300

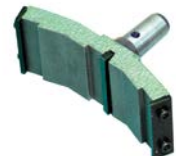


Accessories

Supfina **guarantees** independent consulting, which considers not only the choice of superfinishing abrasives, but also all factors affecting your production.



Double and triple stone holders are available upon request, for larger workpiece diameter.



Coolant Filter Unit

The superfinishing process requires ample flushing to the work surface. A built in filter ensures that the flushing agent will remain clean.

