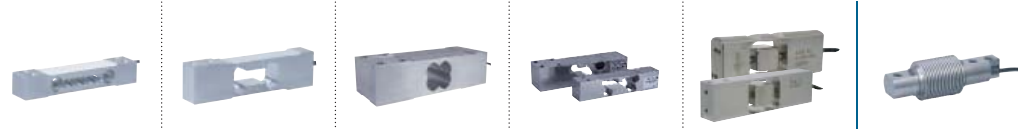


## LOAD CELLS



Model	AQ	AG	AP	AXL - AXH	AVX - AVS	F60X
Type	Single point					Bending
Rated load capacity (Cn)	5 kg ... 35 kg	1 kg ... 100 kg	75 kg ... 635 kg	10 kg ... 500 kg	15 kg ... 75 kg	5 kg ... 500 kg
Accuracy class	C3 / C4	C3 / C6	C3	C3	C3 / C6	C3 / C6
Combined error (% Cn)	0.017 / 0.013	0.017 / 0.008	0.017	0.017	0.017 / 0.008	0.017 / 0.008
Construction	Aluminum	Aluminum	Aluminum	Stainless steel	Stainless steel	Stainless steel
Protection	Coated, IP65	Coated, IP65	Coated, IP65	Sealed, IP69K	Sealed, IP69K EHEDG	Sealed, IP68
Admissible platform size (mm)	350 x 350	400 x 400	up to 700 x 700	up to 600 x 600	up to 600 x 400	-
Certifications	OIML, NTEP, ATEX, IECEx	OIML, NTEP, ATEX, IECEx	OIML, ATEX, IECEx	OIML, ATEX, IECEx	OIML, ATEX, IECEx	OIML, ATEX, IECEx

## ELECTRONICS



● : Standard - ○ : Optional

Model	AAD	DVX	DVS	eNod3 -Din / -Box	eNod4 -Din / -Box
Type	Digital Load Cells			Controller / Transmitter	
Rated load capacity (Cn)	5 kg ... 75 kg	15 kg ... 75 kg	15 kg ... 75 kg	-	-
Accuracy class	OIML 3 000 d	OIML 3 000 d	OIML 3 000 d	0.005 % / OIML 6 000 d	OIML 6 000 d
Internal resolution	24 bits	24 bits	24 bits	24 bits	24 bits
Calibrated resolution	500 000 pts	500 000 pts	500 000 pts	±500 000 pts	±500 000 pts
Max. measuring speed	6.25 ... 1600 meas./s.	6.25 ... 1600 meas./s.	6.25 ... 1600 meas./s.	6.25 ... 1600 meas./s.	6.25 ... 1600 meas./s.
Logic Input (I) / Output (O)	● / ● 2 I / 4 O	● / ● 2 I / 4 O	● / ● 2 I / 4 O	● / ● 2 I / 4 O	○ / ● 4 I / 4 O
Analog output	-	-	-	-	○
Communication	RS485, CANbus	RS485, CANbus	RS485, CANbus	RS232, RS485, CANbus	USB, RS485, CANbus, Ethernet
Construction	Aluminum	Stainless steel	Stainless steel	Rail DIN support / Aluminum box	Rail Din support / Stainless steel Housing
Protocols	Modbus CANopen®	Modbus CANopen®	Modbus CANopen®	Modbus CANopen®	Modbus, Profibus-DP, CANopen®, Ethernet/IP, Profinet, EtherCAT
Protections	IP65	Sealed, IP69K	IP69K EHEDG	- / IP67	- / IP65
Display	-	-	-	-	○ 4"3 - 5"7



Headquartier: Technosite Altéa - 294, Rue Georges Charpak - 74100 JUVIGNY - FRANCE  
 SCAIME SAS - 294, RUE GEORGES CHARPAK - CS 50501 - 74105 ANNEMASSE CEDEX - FRANCE  
 Tél. : +33 (0)4 50 87 78 64 - Fax : +33 (0)4 50 87 78 46 - [info@scaime.com](mailto:info@scaime.com) - [www.scaime.com](http://www.scaime.com)  
 Download all our documents on our website



# Dynamic Weighing

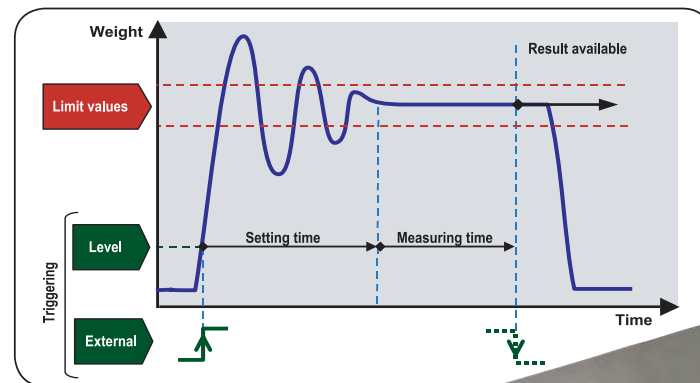
Grading, Check-weighing





# Weighing, controlling at high speed...

SCAIME designs solutions offering speed, accuracy and functions adapted to the specific requirements of dynamic weighing. SCAIME's load cells, electronics and software are a perfect match for checkweighing, and grading applications.



## LOAD CELLS:

SCAIME's wide range of load cells allow customers to solve their specific requirements for dynamic weighing.

### High speed digital load cells...

SCAIME have developed a range of high performance digital load cells. Specially designed for dynamic applications in hardest environments.

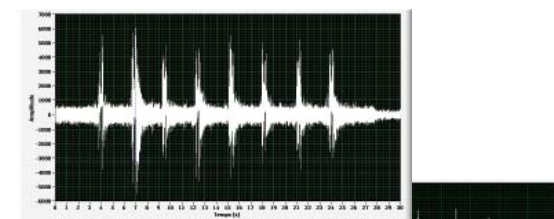
- Single point load cells
- Capacities from 5 to 75 kg
- Integrated eNod electronics
- Dynamic checkweighing functions
- 2 digital inputs and 4 outputs
- CANopen® and MODBUS Communication
- Stainless steel IP69K (DVX/DVS) or aluminum IP65 (AAD)
- Hygienic design, EHEDG compliant (DVS)

### A comprehensive range...

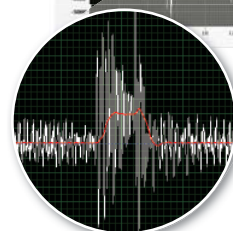
- Single point or bending beam load cells
- Capacities from 1 to 5 000 kg
- Aluminum or stainless steel
- Numerous mounting possibilities



▼ checkweigher signal without filtering



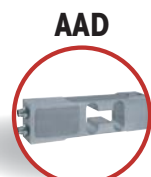
signal filtered with eNod or DVX



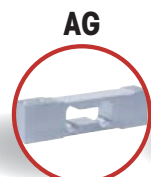
DVS



DVX



AAD



AG



F60X



AVX



AQ



AXL

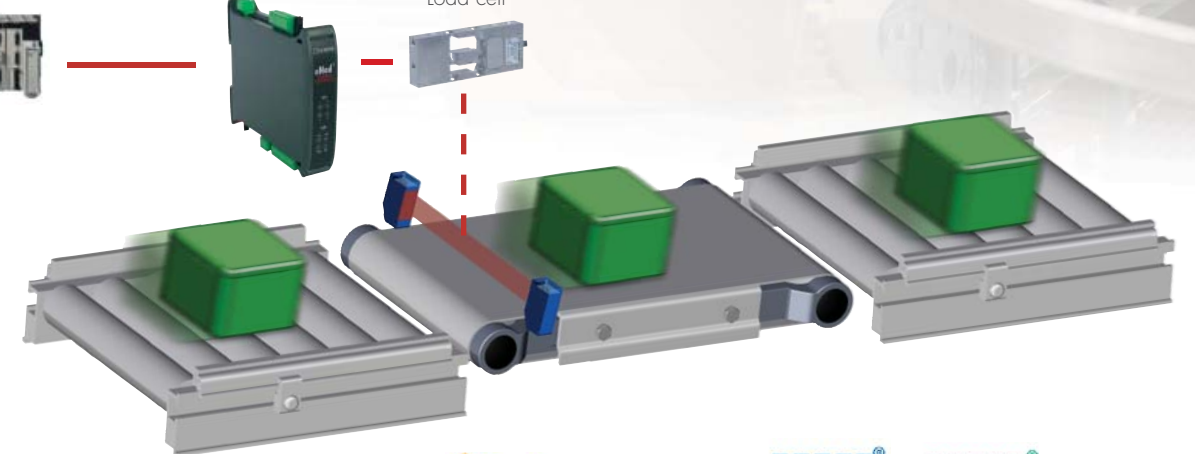


PLC



eNod4-C

Load cell



CANopen Modbus EtherNet/IP PROFIBUS PROFINET EtherCAT

## ELECTRONICS:

With eNod controllers and digital load cells, SCAIME offers a cost effective and powerful solution for the control of dynamic weighing systems.

### Powerful functionalities:

In addition to offering 1000 meas./s. transmission rate with an available resolution of  $\pm 500\ 000$  divisions, eNod and DVX/DVS/AAD integrate specific application software dedicated to dynamic checkweighing:

- It takes care of complete signal processing by calculating automatically weight values.
- It controls by itself the complete weight acquisition process, also taking in consideration external detectors signals.
- It includes powerful digital filters dedicated to vibration noise cancellation.

### Designed for communication:

eNod controllers and DVX/DVS/AAD digital load cell are designed to easily be connected to all kinds of PLC's with RS485, RS232 and CANbus, using MODbus-RTU, CANopen®, PROFIBUS-DP, Ethernet/IP, Modbus-TCP, Profinet and EtherCAT protocols.

## Touchscreen eNodTouch

All eNod4 weighing controllers could be associated with our range of Human-Machine interfaces eNod Touch. These LCD Touchscreens (4"3 to 5"7) allow weight display, system calibration and setting as well as application control.

## PC SOFTWARE:

eNodView is the software for DVX/DVS/AAD or eNod's calibration and programming. It is also a powerful tool for signal acquisition and analysis, allowing:

- Graphic visualization of the signal in frequency and time
- Simulation and programming of integrated digital filters



These capabilities make eNodView the ideal tool for the analysis of vibrations in mechanical systems with user optimization of programmable filters.